

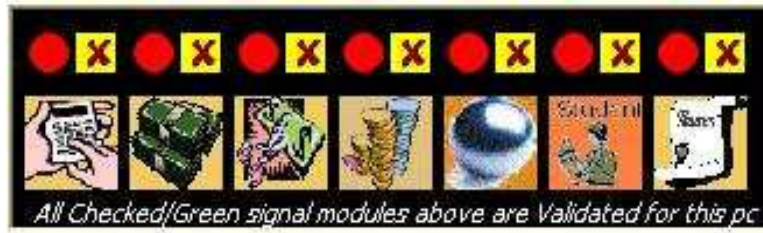
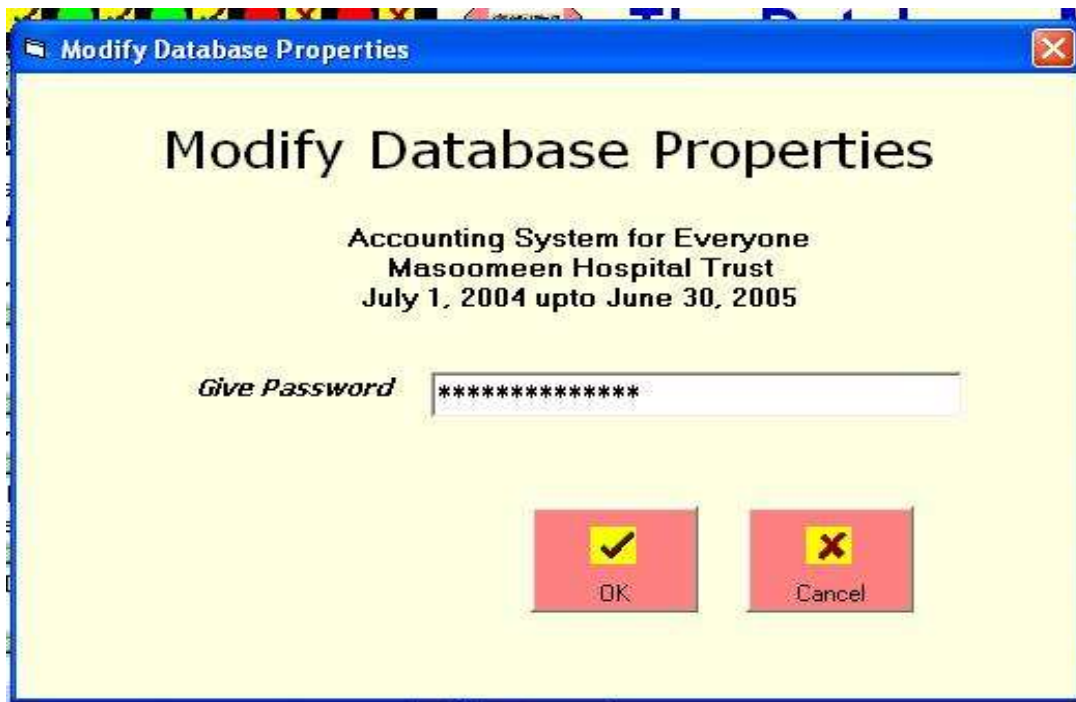


(vii) The seven circles which are Red on top of each software icon will change to Green as the License is authenticated and a Cross  will change to Checked sign 



2.7 Configure Database Properties:

Each database in a tree has several properties, which can be configured as per user's choice. These properties can be viewed by clicking on Modify Button.



You can access properties either by Global Password or level 'A' password set by you. The Global Password is ALHAMDHOLLILAH.

After accessing through authenticated password database properties are shown as follows:-

Properties of Selected Database

Modify Database Properties

Accounting System for Everyone

Database Path I:\EAP-BE

Backup Path D:\BACKUP

Backup File MHT0405A

Company Name Masoomeen Hospital Trust

Date of Last Audit

<u>C</u> ash Book	October 01, 1990
<u>G</u> eneral Journal	October 01, 1990
<u>S</u> ales Journal	October 01, 1990
<u>P</u> urchase Journal	October 01, 1990
<u>S</u> ervices Journal	October 01, 1990
<u>B</u> ank Receipt Journal	January 10, 1931
<u>B</u> ank Payment Journal	October 01, 1990

Accounting Year

Starts July 01, 2004

Ends June 30, 2005

Passwords

Level A A

Level B B

Level C C

The Database Properties will depend upon business process. Following are the properties and its meaning which the user should define for activating a Database

Properties	Purpose of the Property	Modify
Database Location	Displays full path of the Database selected	No
Module Image	Displays type of database like Accounting, Inventory, etc.	No
Backup Path	The Path where Backup will be stored	Yes
Backup File	Name of file that will be created every time when Backup is made Should be same as Database folder name in the Database Location column above	Yes
Company Name	The name of company to which this Database belongs	Yes
Accounting Year	Display the Accounting Year of the Database. The starting day of the year is set by the user. The ending day is updated automatically. The data entry of transactions in the database is restricted within this period.	Yes
Audit Date	Displays Date up to which data is audited. Each Transaction type has a different Audit Date. The Data modification and new transactions are restricted up to Audit Date set here.	Yes

Properties	Purpose of the Property	Modify
Password	<p>There are Three Passwords which should be set to run any program. Each one of the three passwords must be different from one another and should not be blank. Whenever a main program is started, Password is asked. Any one of these three passwords can start the main program. Each password set different behavior of the Data entry and modification of transactions as under.</p> <p>Level-A Program started with Level A password activates all data entry and modifications options</p> <p>Level-B Program started with Level B password activates data entry and modifications only on the Last day of transactions. As soon as a new day is added, all the previous days data are protected. It can only be seen and read and no modification or addition is allowed in previous days</p> <p>Level-C Program started with Level C password disables all data entry and modification options. It only shows data and print reports. Normally used for top executive to avoid any accidental erasure of data.</p>	Yes

Any of the changes made in database properties are stored when Save button is clicked.