

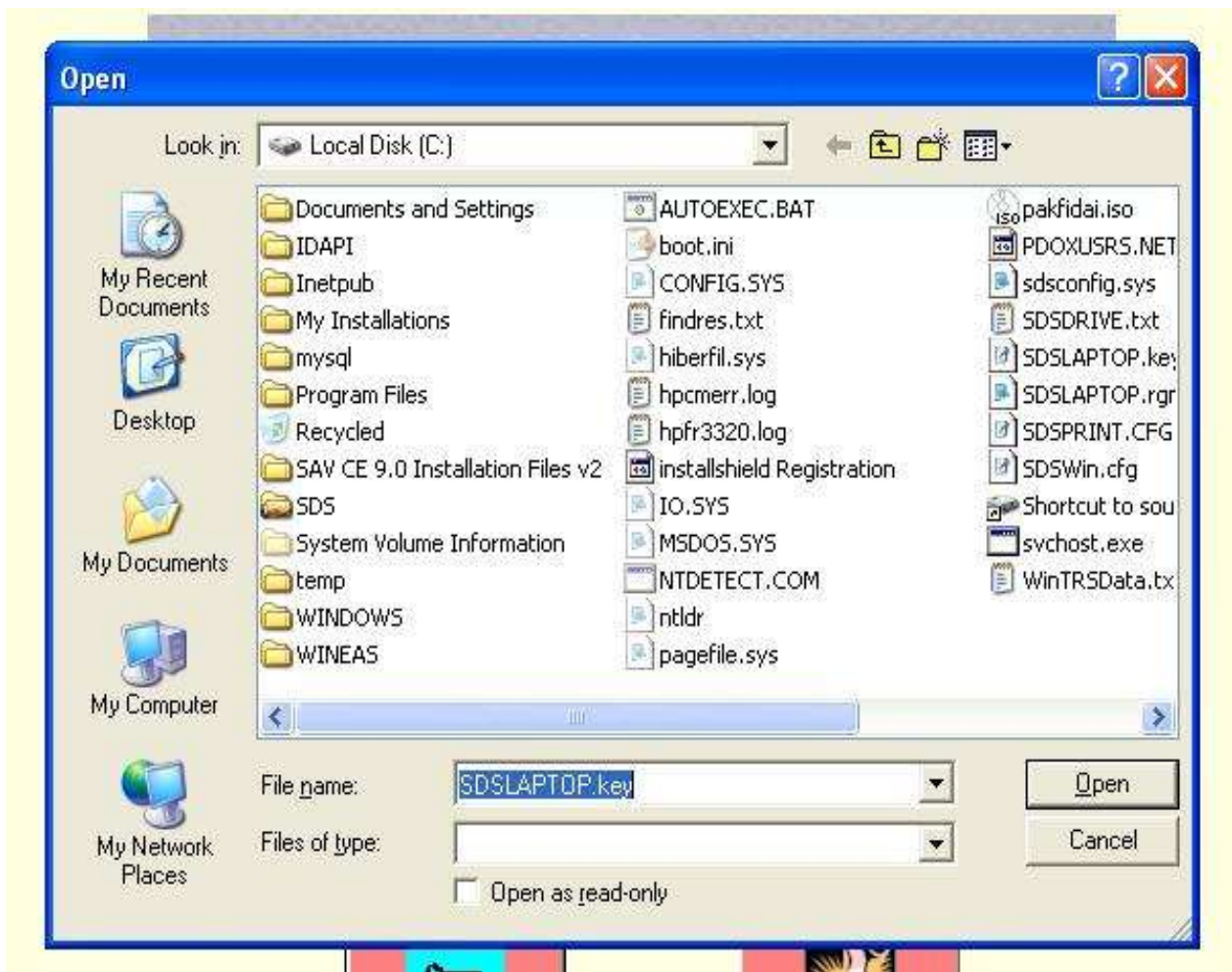
2.6 Installation of Digital License Keys:

When the Digital License Key file is received from SDS install it by doing following:-



- (i) Run the SDSDatabase Manager
- (ii) Click on Main button
- (iii) You are offered two choices since License Key file is not found

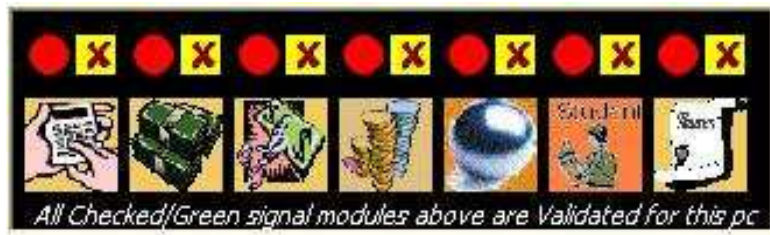


- (iv) Click on Install button This will ask you to give key filename



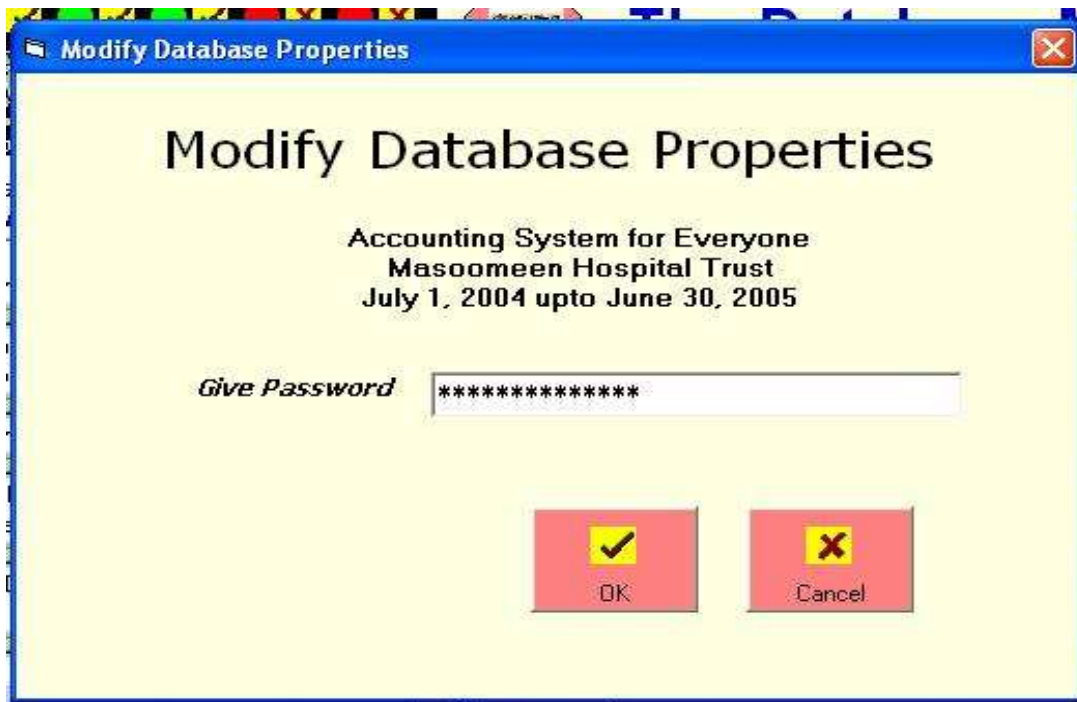
- (v) Browse and select the key file and Click open Button.
(vi) The key file will be installed.

(vii) The seven circles which are Red on top of each software icon will change to Green as the License is authenticated and a Cross  will change to Checked sign 



2.7 Configure Database Properties:

Each database in a tree has several properties, which can be configured as per user's choice. These properties can be viewed by clicking on Modify Button.



You can access properties either by Global Password or level 'A' password set by you. The Global Password is ALHAMDHOLLILAH.