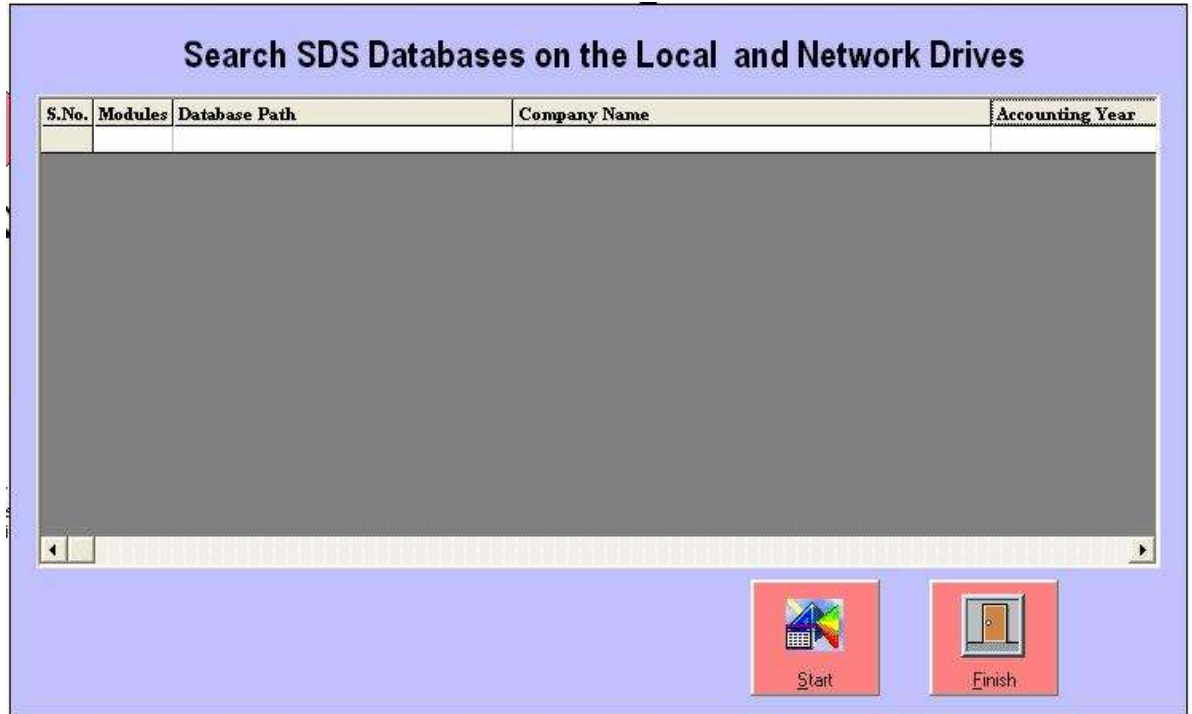


Click Start Button to locate all your existing databases on local and Network Drives. All the databases located are shown in a tree view form upon completion of Search Process.



The properties of all the databases located are stored in a configuration file at C:\Program Files\Software Development Services\mydatabase\dosdbf.cfg

Every time when the Database Manager is started, it shows you all the databases on Network in Tree View form with Properties of each selected database on the opposite side as shown below

